

MATERIAL: 05/---x45x15 as stated  
 FINISH: Hot dip galvanised  
 TOLERANCE: Panel sizes +0 to -2mm  
 WELD SPEC: Plank  
 NOTE: PPC removable nosing optional

Plank Specification

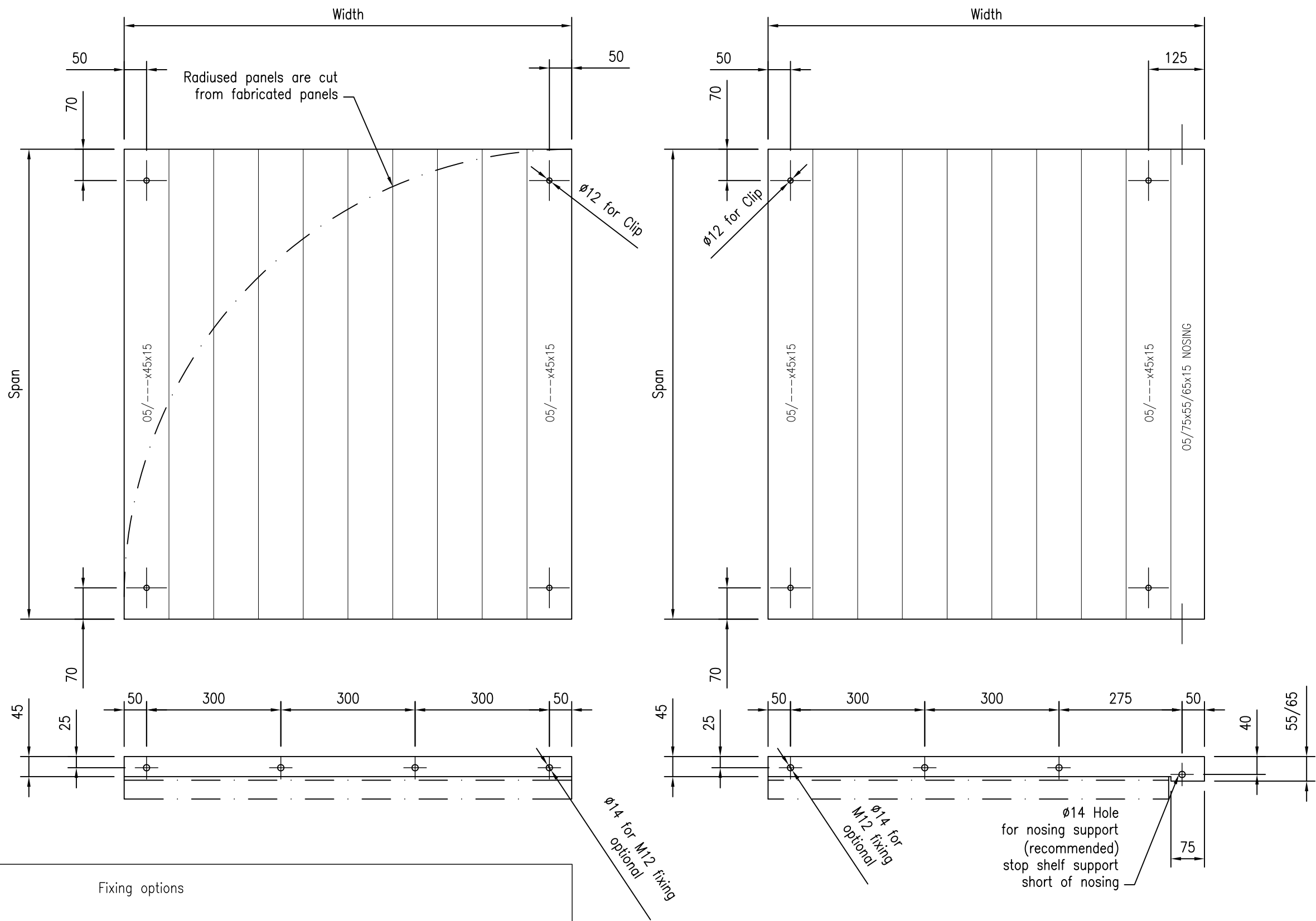
- Nosing 05/75x55x15x2  
for spans of 1500 and below  
05/75x65x15x2  
for spans of 1600 to 1850
  - Main planks 05/150x45x15x2  
05/125x45x15x2  
05/112x45x15x2  
05/100x45x15x2  
05/87x45x15x2
- Note: Please contact Elefant Gratings for recommended planks sizes.  
Please advise the following - Application, Loading & Free spans  
Max. 2mm spacing between planks
- Make-up planks  
Please note these can only be used in the middle of panels as make-up pieces
- 05/75x32  
05/62x32  
05/50x32

Fixing Options

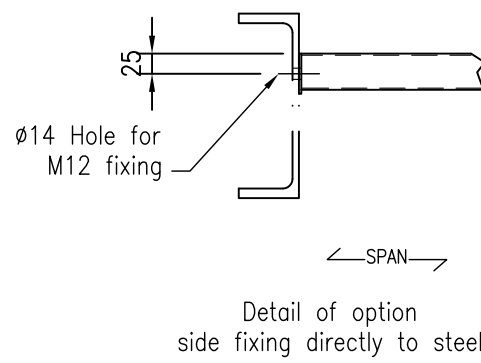
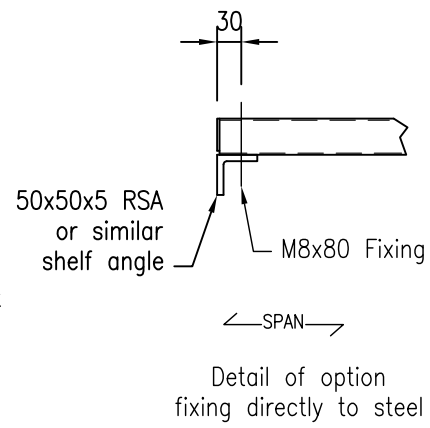
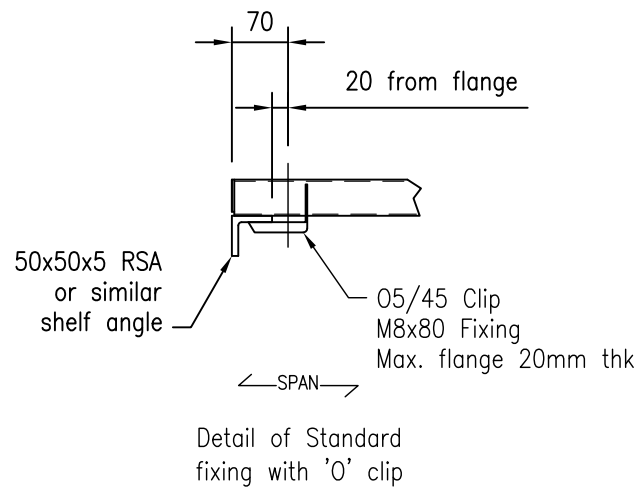
- Top fixing, using 'O' clip on shelf angle (20mm maximum flange thickness)
- Side fixing, using M12 bolts
- Top fixing, bolting through shelf angle

Notes

- Do not cantilever panels more than 200mm and where possible stitch bolt adjacent panels together @ 300 centres



Fixing options



Elefant Gratings Ltd  
 Unit 9 Invicta Business Park  
 London Road  
 Wrotham  
 Kent TN15 7RJ  
 Tel: 01732 884 123  
 Fax: 01732 885 962  
 email: sales@elefantgratings.com

Title: Typical 05 panel design & fixing details		Constr.:	
Draw.:	PW	18/11/09	
Appr.:			
Draw No		Ele-230210	
Rev.:	-		